

SS270V

COMFORT EFFICIENT EPITOME VALUES



QUALITY **NEW MASTERPIECE**
CHANGES THE WORLD
品质改变世界



● **Rated Power**
53.7 kW / 73 hp

● **Operating Weight**
4250 kg / 9370 lb

● **Rated Operating Capacity**
1290 kg / 2850 lb

● **High Flow**
125L/min / 33 gpm

KEY FEATURES

● Comfortable ride

Spacious and well-sealed cab with low noise level.
The sliding front door for convenient access.

● Intelligent operation

Stable driving and automatic leveling systems with hydraulic pilot control and DA power distribution technology for precise movements.

● Efficient performance

Vertical lift structure with high unloading height, dual-speed configuration, and quick transition speed for fast and efficient work.

● Versatile use

Standard and high-flow output options with various attachments available, such as buckets, sweepers, snow removers, millers, and augers, to meet different job requirements.

PERFORMANCE PARAMETERS

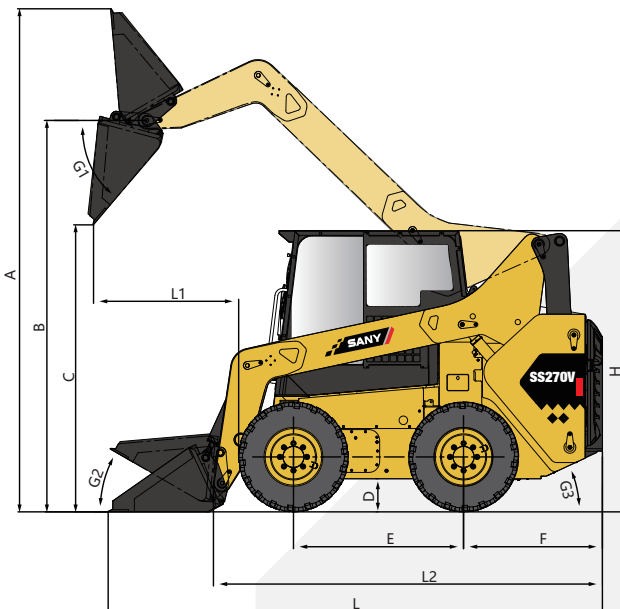
SS270V

Engine Model	Yanmar 4TNV98CT
Engine Speed	2400 rpm
Rated Power	53.7 kW / 73 hp
Peak Torque	280 N.m / 206 lbf-ft at 1560 rpm
Displacement	3.319 L / 203 in ³
Aspiration	Turbo-charger
Emissions	Tier 4 Final
Cycle Time (Raise/Lower/Dump)	9.3 s
Loader Hydraulic Pressure	23 MPa / 3336 psi
Battery Voltage	12 V
Diesel Tank	100 L / 26.4 gal

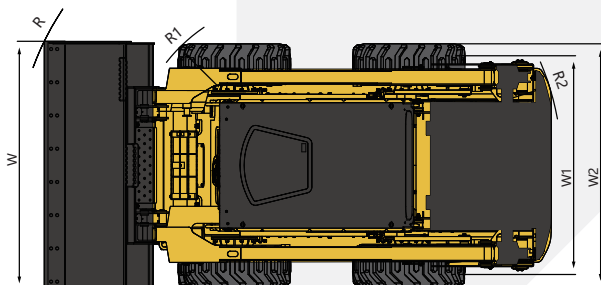
Rated Operating Capacity	1290 kg / 2850 lb
Tipping Load	2580 kg / 5700 lb
Operating Weight	4250 kg / 9370 lb
Breakout Force, Tilt Cylinder	28.8 kN / 6670 lb
One Speed	11.1 km/h / 6.9 mph
Two Speed	20 km/h / 12.4 mph
Tire Size	12-16.5 14PR
Standard Flow	90L/min / 23.8 gpm
High Flow	125L/min / 33 gpm
Lift Geometry	Vertical Lift
Cab	FOPS & ROPS

OVERALL MACHINE SIZE

SS270V



A Maximum Overall Height	4200 / 165.5 in
B Bucket Pin Height at Maximum Lift	3350 / 132 in
C Clearance at Maximum Lift and Dump	2620 / 103.2 in
L1 Reach at Maximum Lift and Dump	985 / 38.8 in
D Ground Clearance	228 / 9 in
E Wheelbase	1300 / 51.2 in
F Bumper Overhang behind Rear Axle	1050 / 41.4 in
R Turning Radius from Center-Bucket	2230 / 87.9 in
R1 Turning Radius from Center-Coupler	1352 / 53.3 in
R2 Turning Radius from Center-Machine Rear	1733 / 68.3 in
G1 Maximum Dump Angle	43°
G2 Rollback Angle of Bucket on Ground	30°
G3 Departure Angle	25°
L2 Length without Bucket	2991 / 117.8 in
L Length with Bucket on Ground	3756 / 148 in
W1 Tread Over Gauge with Spec Tires	1485 / 58.5 in
W2 Width without Bucket	1820 / 71.7 in
W Width with Bucket	1880 / 74.1 in
H Height to Top of Cab	2100 / 82.7 in



Sany Industry Town, Economical and Technological Development Zone, Kunshan, Jiangsu, China
Zip Code: 215300
Tel: 0086-0512-57831902
Fax: 0086-0512-57831999-11102
After-sales Service Hotline: 4008 28 2318
Consultation/Complaints Hotline: 4008 28 2333
Web: <http://www.sany.com.cn>