



BHL95

Backhoe Loader



KEY FEATURES

- 4WD Powershift Transmission with Limited Slip Differential, and Drive Shaft Guard, Ride control, Joystick FNR, Kick down, Clutch switch.
- Parking brake, Spring applied, Hydraulic release, Starting engine and traveling Protect, Shut off auto active.
- Extensible stick, 4 in 1 multi-purpose bucket, Stabilizer pad, rubber and steel, two purpose.
- Load Sensing Hydraulic with Pilot Controls and ISO/SAE Pattern Change. Loader bucket Self-leveling, Return to dig, Backhoe swing with anti-yaw valve.

Total Weight

9,000 Kg - 19,842 lb

Rated Power

74.4 kW/2,200rpm
100hp/2,200rpm

Bucket Capacity

1.0m³ - 1.3yd³
0.20m³ - 0.26yd³

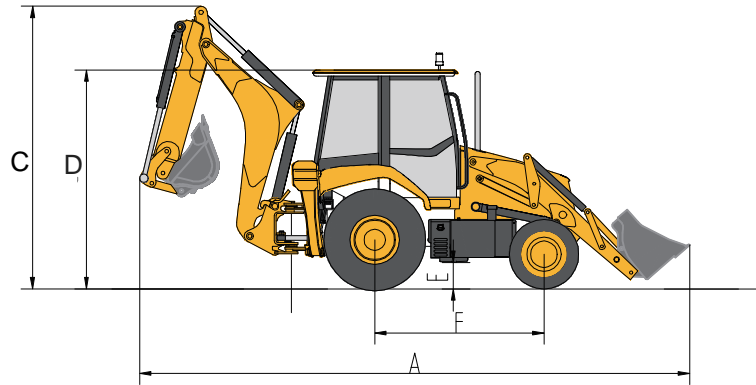
Digging Depth

5,366mm - 17.6 ft

BHL95 Dimensions & Specifications

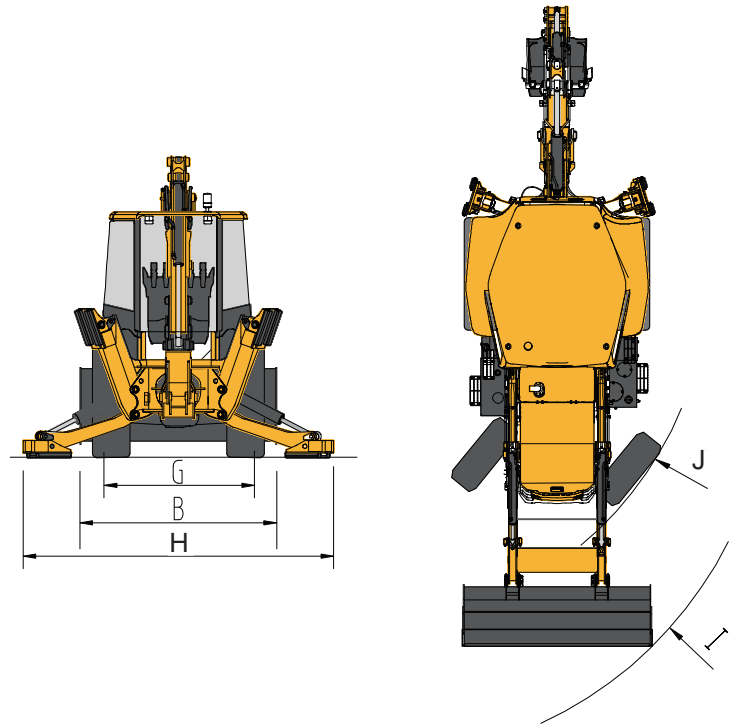
OVERALL DIMENSIONS

	Standard	Metric
A	Transport Length	7381 mm
B	Transport Width	2280 mm
C	Transport Height	3732 mm
D	Cab Height	3129 mm
E	Minimum Ground Clearance (Gear-box)	320 mm
F	Wheelbase	2245 mm
G	Front Wheel Tread Gauge	1775 mm
H	Rear Wheel Tread Gauge	1780 mm
I	Turning Circle (Front Tire Outskirt, Brake)	8500 mm
J	Turning Circle (Front Tire Outskirt, No Brake)	9448 mm



MACHINE PARAMETERS

Operating Weight		9000 kg
Engine Type	Turbo, Air Charge, Electric Control	
Engine Max Power (Gross)		74 kW
Engine Max Torque		410 Nm @ 1600 rpm
Engine Displacement		3.6 L
Main Pump Flow		156 L/min
Speed Gear 1		5.0 km/h
Speed Gear 2		9.0 km/h
Speed Gear 3		19 km/h
Speed Gear 4		34 km/h
Max Arm Digging Force (ISO)		36.2 kN
Backhoe Bucket Digging Force		56.5 kN
Fuel Tank Capacity		140 L
Hydraulic Tank Capacity		120 L
Cooling System Capacity		20 L
Engine Oil Capacity		8.5 L
Gear-box Oil Capacity		18 L



WORKING RANGE

	Standard	Metric
Backhoe		
K	Maximum Digging Height	5985 mm
L	Maximum Reach from Center of Swing Pivot	6644 mm
M	Maximum Digging Depth	5366 mm
Loader		
N	Maximum Height to Bucket Hinge Pin	3478 mm
O	Dump Clearance	2700 mm
P	Reach at Dump Position	730 mm
Q	Maximum Digging Depth with Bucket Levelled	88 mm
R	Bucket Rollback Angle @ Ground Level	40°
T	Loader Dump Angle @ Full Height	44°
U	Maximum Operating Height	4293 mm

